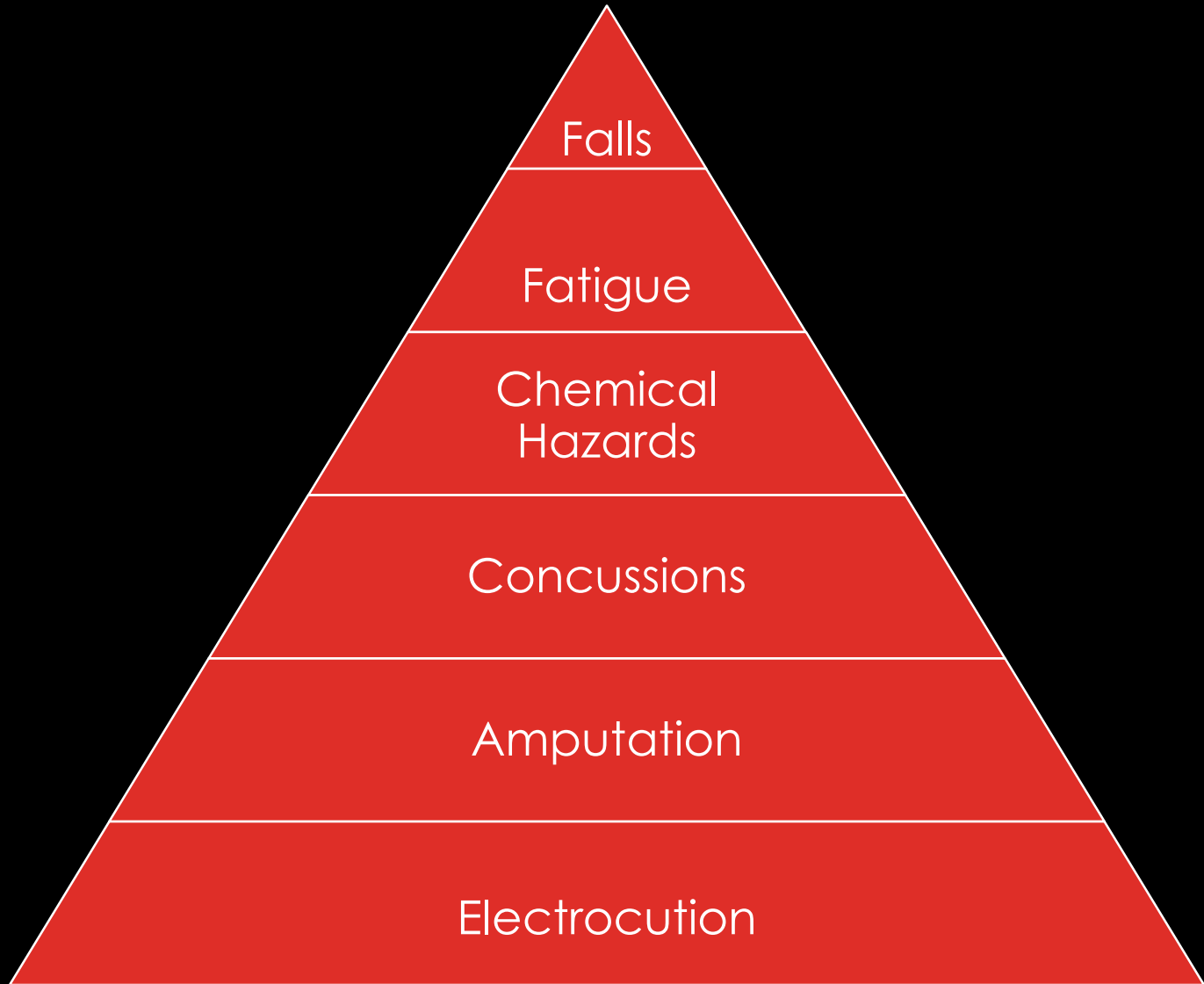




**The Show Must Go On ...
Safely!**

Jodi L. Traas, Community
Insurance Corporation (CIC)

WHAT SAFETY HAZARDS?



THEATER SAFETY PROGRAM SHOULD INCLUDE:

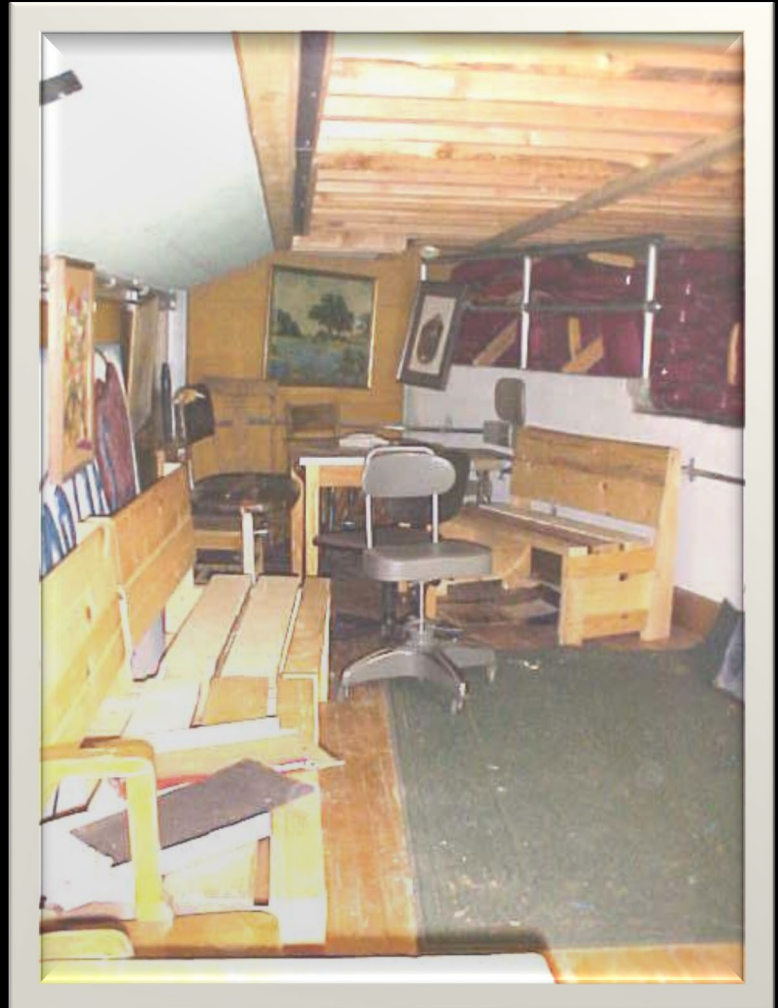
- Written Policies & Procedures (identify responsibility, machinery use, safety procedures)
- Training For Students & Volunteers (Waivers)
- **Inspection** Programs & Logs
- Accident & Incident Review
- District Safety Committee Rep
- Follow Local, State & Federal Codes

SUPERVISION

Students Supervised at All Times

No Participation during Lunch Hours Unless Supervised

Supervisors must be apprised of their responsibilities



STUNTS/PROPS

- *Flight directors have ETCP theatre rigging certification*

Flying company example:

- <https://www.zfxflying.com/>

- Do **NOT** Fly anyone from the Audience

- Props: Guns, Fog



FALLS-CATWALKS



LADDER SAFETY



- Conduct ladder safety training
- Straight ladder must have safety feet
- 4 to 1 ratio
- Tie-off if possible
- Use proper length ladder
- Make sure ladder is stable
- Stepladder used with spreader bars locked
- Clear debris around ladder

LADDERS



- Is this type of ladder necessary?
- Riding the ladder
- Students fear of heights
- Locked casters
- Competency

SCAFFOLDS



- Access ladder
- Planking (full on working level & in good condition)
- Guardrail at top
- Toe boards
- Caster locks
- Secure joints
- Brace bottom to ensure square

AERIAL LIFT/SCISSOR LIFT



- Operators must have documented training
- No Operators under 18
- Full body harness/lanyard required if basket extends beyond the wheel base
- Floor free of drop-offs
- Gates closed while in use
- Both feet on the platform
- Never use ladders, planks, etc. to extend height from the basket

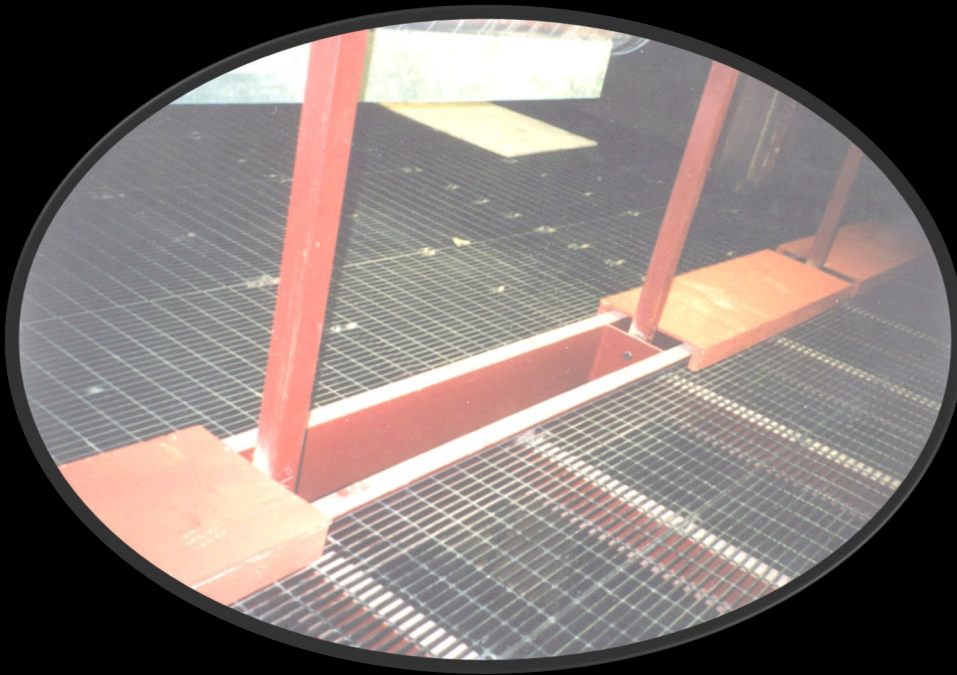


STAIRCASES



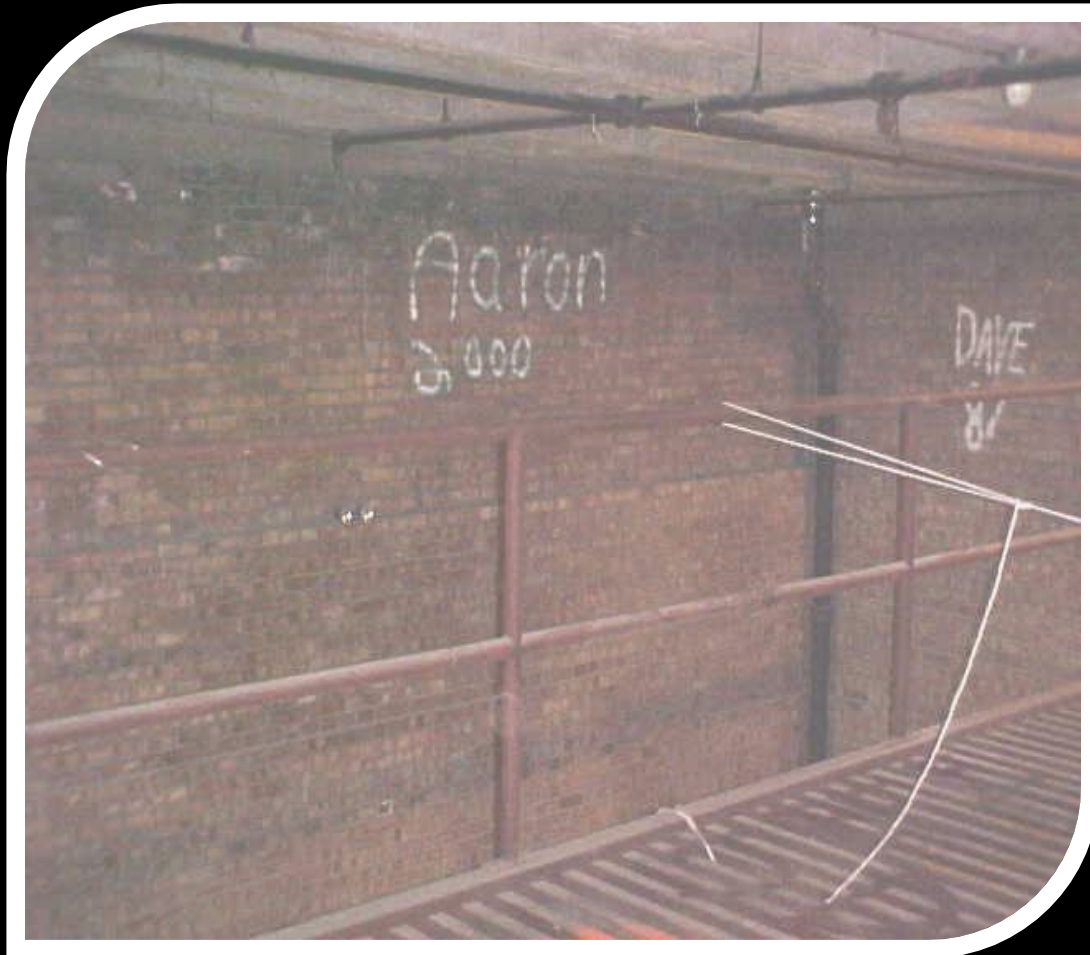
- Access to catwalks and elevated stairs is controlled
- Students, employees and volunteers must not be allowed to walk out on clouds to change lights
- Check locks and conduct a walk-through of this area on a regular basis

FLOOR OPENINGS



- Cover any floor openings where there is a potential fall hazard
- Secure barriers to prevent from movement
- Withstand 2 times maximum load

FALLS



- Eliminate access to areas such as this by all students and volunteers
- Inspect these areas annually
- Toe board -4"

ORCHESTRA PITS



- Consider placing a removable guardrail system around large openings (orchestra pits)
- Safety nets are another option

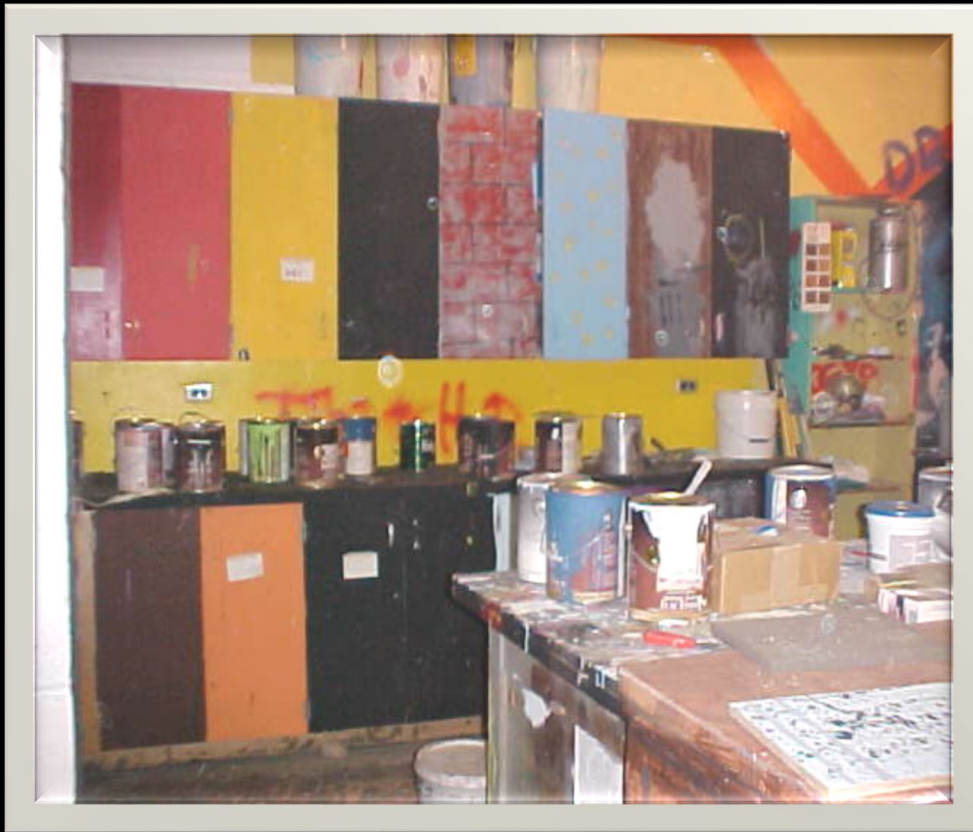


FLAMMABLES

- Provide metal flammable storage cabinets
- Safety Data Sheets (SDS) needed for each product
- Students & employees trained on hazardous materials and the District's Hazard Communication Program
- Fire extinguisher inspections & extinguishers serviced if expended



HAZARDOUS MATERIALS



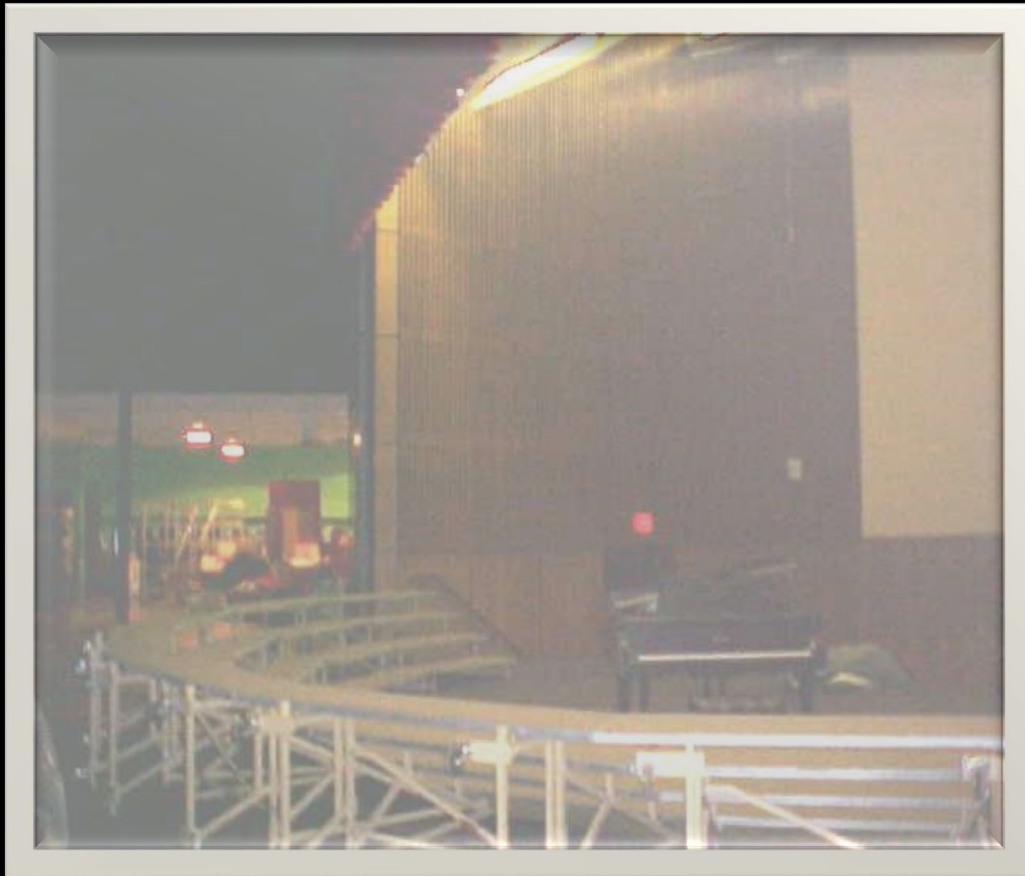
- Eyewash/Shower required for corrosives
- Proper ventilation
- Respirators required? If so, respiratory protection program includes proper fit testing, medical surveillance, etc.
- Proper storage

CURTAINS



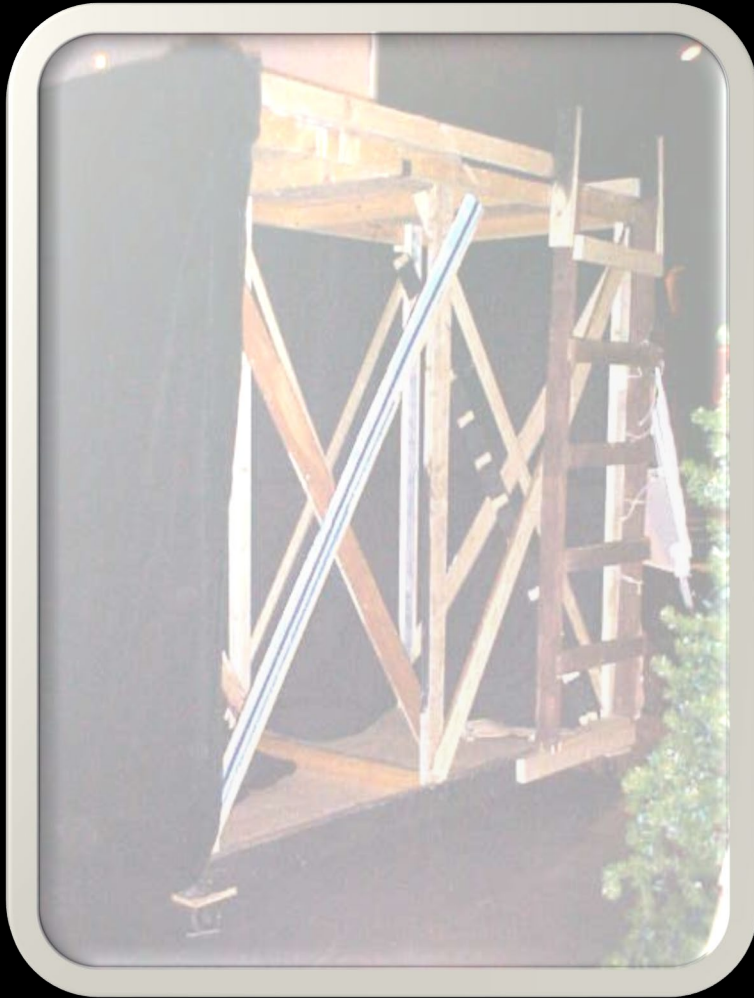
- ANSI standard E1.22 (2016) describes the material, design, fabrication, installation, operation, testing and maintenance of fire safety curtains.

CURTAIN OBSTACLES



- There must never be an obstacle to the curtain from falling (such as this set up for choir) unless it is a deluge curtain fire extinguishing system.

BUILDING SETS



- Stability
- Structural integrity
- Fall hazards
- Guardrails (vertical height of 42 inches from upper surface to top rail)

MACHINERY



- Personal Protective Equipment to include safety glasses, safety goggles, hearing protection or face shield.
- Training to include **written** exam such as Technical Education classes provide
 - Band Saw
 - Radial Saw
 - Drill Press
 - Table Saw
 - Hand & Power Tool

MACHINE GUARDING



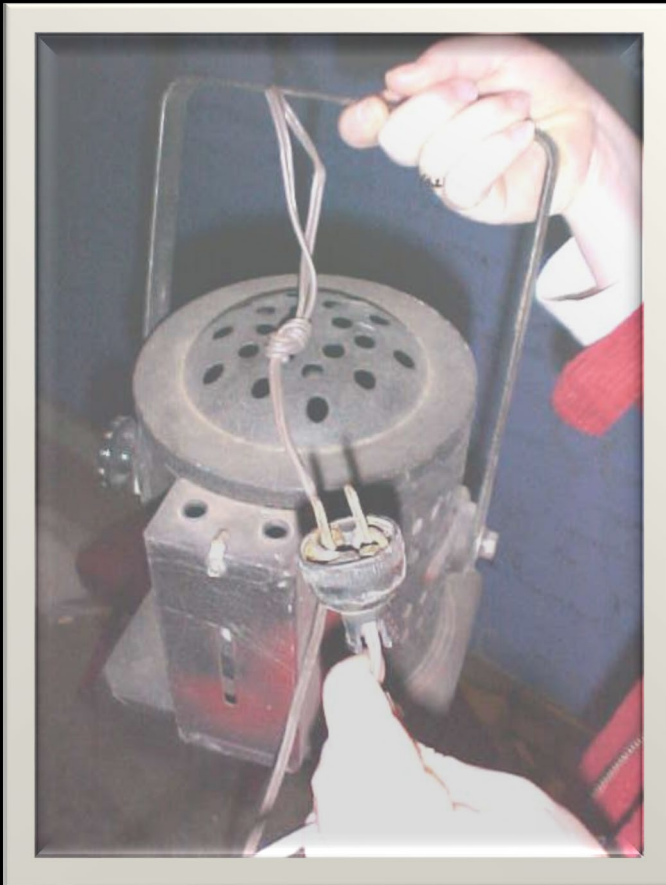
- Radial Arm Saw: guard should adjust to cover the entire saw blade
- Table Saw: hood guard that covers the saw blade at all times and adjusts to the thickness of the stock
- Equipment bolted to table top or floor
- Lock-out procedures for machinery maintenance and set-up

PYROTECHNICS/FIRE HAZARDS



- Pyrotechnics (must be approved by the fire department for flash pots, etc. and have a certified operator on site with the proper insurance coverage)
- Invite Local Fire Department Prior to Production

ELECTRICAL HAZARDS



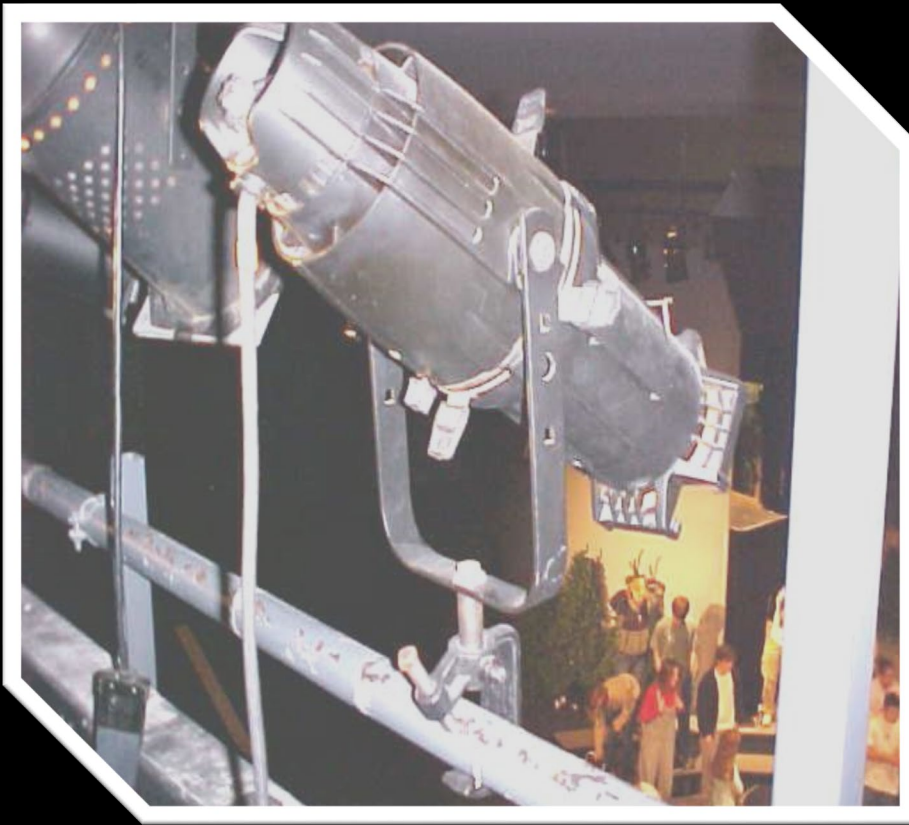
- Inspection program of power & extension cords
- Have a qualified electrician inspect and make necessary repairs or changes to the equipment
- Follow the National Electrical Code (NEC)

ELECTRICAL PANELS



- Maintain a clearance of 3 feet in front of all panels.
- The width of the clearance must be at least 30"
- Panels must be closed
- Yellow painted lines or signs illustrate the area

LIGHTING



- Ensure lighting is secured to the guardrail
- Place a wire safety cable around each light attached to the catwalk railing to eliminate fall exposure down below to the audience.

LIGHTING – TRIP HAZARD



LAMP STORAGE



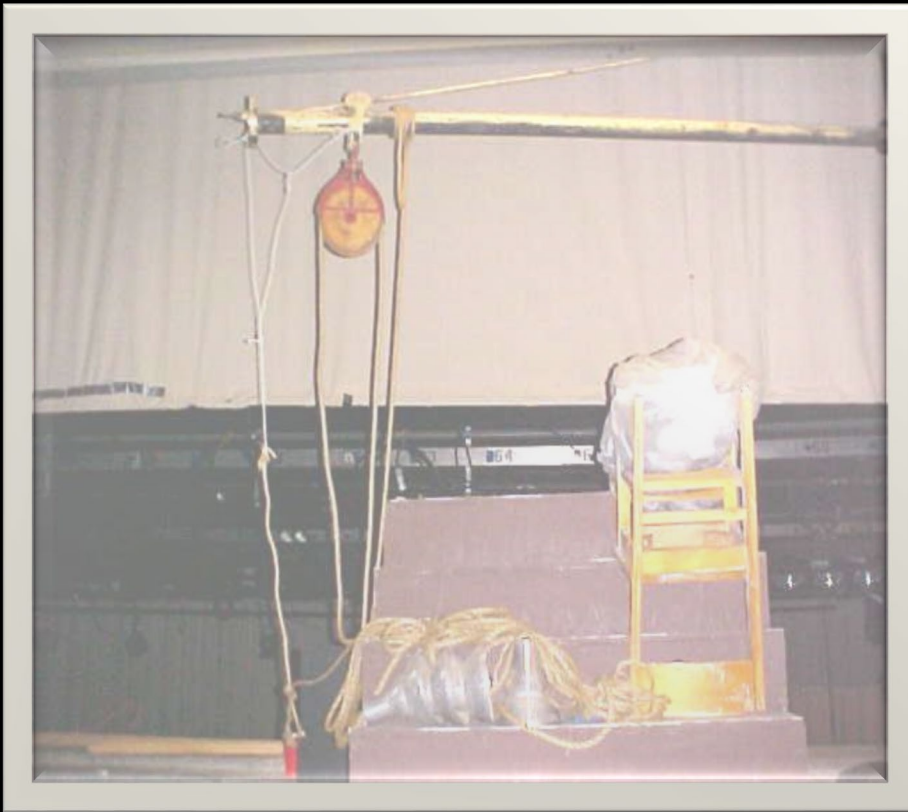
- Excellent storage rack and organization

RIGGING-HEAD INJURIES



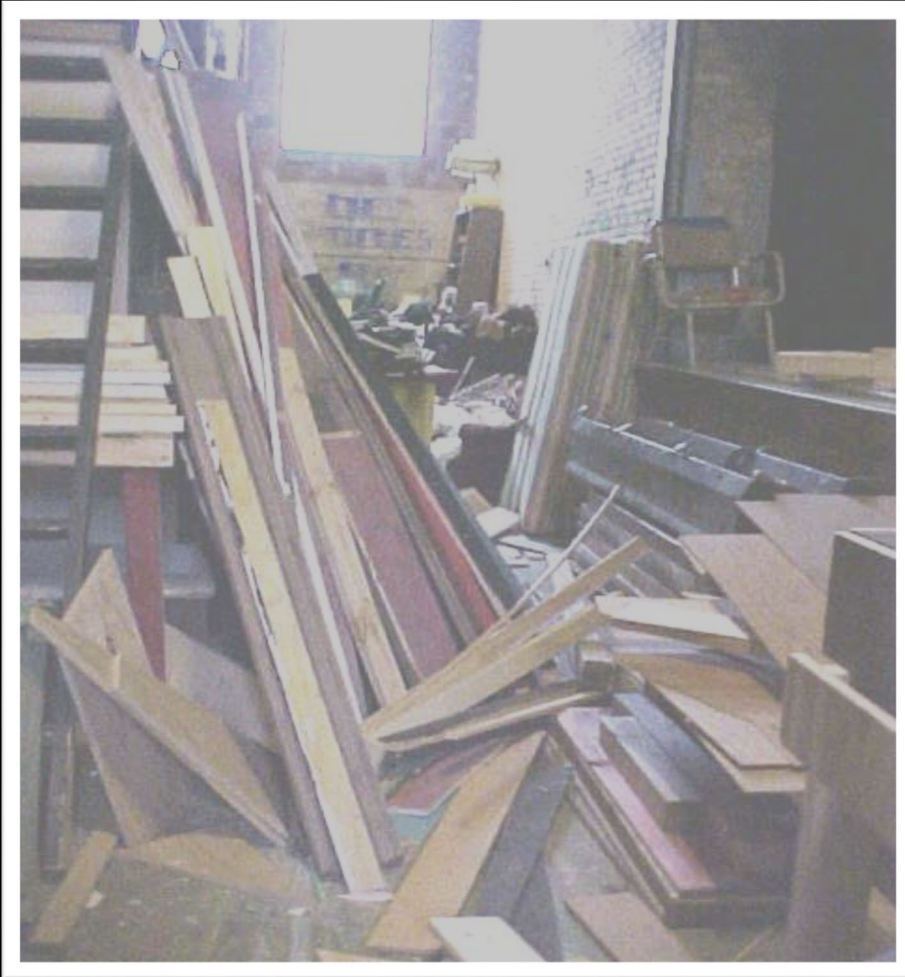
- Hard Hats
- Locking Rail
- Full Arbor of Red Painted Weights
- Rigging Inspection

PULLEY SYSTEMS



- Eliminate makeshift pulley systems for raising props and furniture to storage areas
- Inspect lifting devices on a regular program
- Is system designed to carry the intended weight?

HOUSEKEEPING



- Clearly designate permanent aisle-ways
- Keep aisles clear with no obstruction across or in aisles
- Institute a periodic self-inspection program to monitor housekeeping to be sure it does not deteriorate
- Offer Annual Dumpster

STORAGE RACKS



- Designed to hold capacity
- Heavy items on the bottom shelves
- Do not place props and furniture precariously

COSTUMES



- If the item is combustible (scenery, curtains, props, costumes, wood structures, etc.) must be flame retardant
- Keep a dated log
- Different sprays may be needed for a variety of materials (painted vs. unpainted surfaces, porous materials, etc.)
- Make-up (Individual & Expiration Dates)

PROPS



- Are they safe?
- Refrigerators with a positive locking device does not allow an individual on the inside to release the lock. CPSC #5072
- Live Christmas trees

AUDIENCE SEATING



- Check local ordinances or codes for seating capacity
- ***Occupancy signs must be posted***
- Repair or remove broken seats
- Large assemblies – fire department inspection
- Repair carpeting that would cause trips/falls
- Exit lights illuminated
- Emergency lighting

EMERGENCY EXITS



- Exits must be accessible (paint yellow lines if necessary to keep aisles clear of props and materials)
- Exit lights must be checked & working properly
- Emergency lighting

EXITS



RESOURCES

- Dr. Randall W.A. Davidson...
 - Practical Health and Safety Guidelines
 - for School Theater Operations
 - Assessing the Risks in Middle, Junior and Senior High School Theater Buildings and Programs
 - ...is written for all individuals who operate or oversee a school performing arts or theater program. This book reveals the risks and hazards frequently found in school theater buildings and programs. Readers will learn how to:
 - Identify risks and hazards in their own school theater facility
 - Establish a baseline of security in their school theater facility
 - Reduce the risk of injury or harm to their students and staff
 - Educate their students and staff in proper safety measures
 - Create a safe, healthy, and enjoyable theater program for all
 - ...is a call to action to protect and save students and instructors in the performing arts, worldwide.
- International Secondary Education Theater Safety Association
www.isetisa.org
- [Theatre-Safety-Guidelines-2018.04.27-ASCIP.pdf](#)

CONTACT INFORMATION



- Jodi L. Traas
 - Senior Risk Management Consultant
 - Community Insurance Corporation (CIC)
 - 800-511-9797
 - Jodi@aegis-wi.com



FOLLOW THESE GUIDELINES &

The Show *Will* Go On Safely