



Partnering With Your Local Emergency Responders

It takes an entire community.



Scott Johnson

Buildings and Grounds
Manager—School
District of La Crosse



WSSCA

Wisconsin School Safety Coordinators Association

Officer Nate Ganrude

School Resource Officer-
School District of West Salem



SCHOOL DISTRICT OF
WEST SALEM

Office of School Safety and ACT 143

*Values engagement between Educational professionals,
Students, Staff, Law Enforcement and Emergency
Responders.

*

Law Enforcement and School Safety Plans

According to the Northwest Regional Educational Laboratory, there are 3 environments that School Safety Plans focus on

- 1- Physical Environment**
- 2- Social Environment**
- 3- Academic Environment**

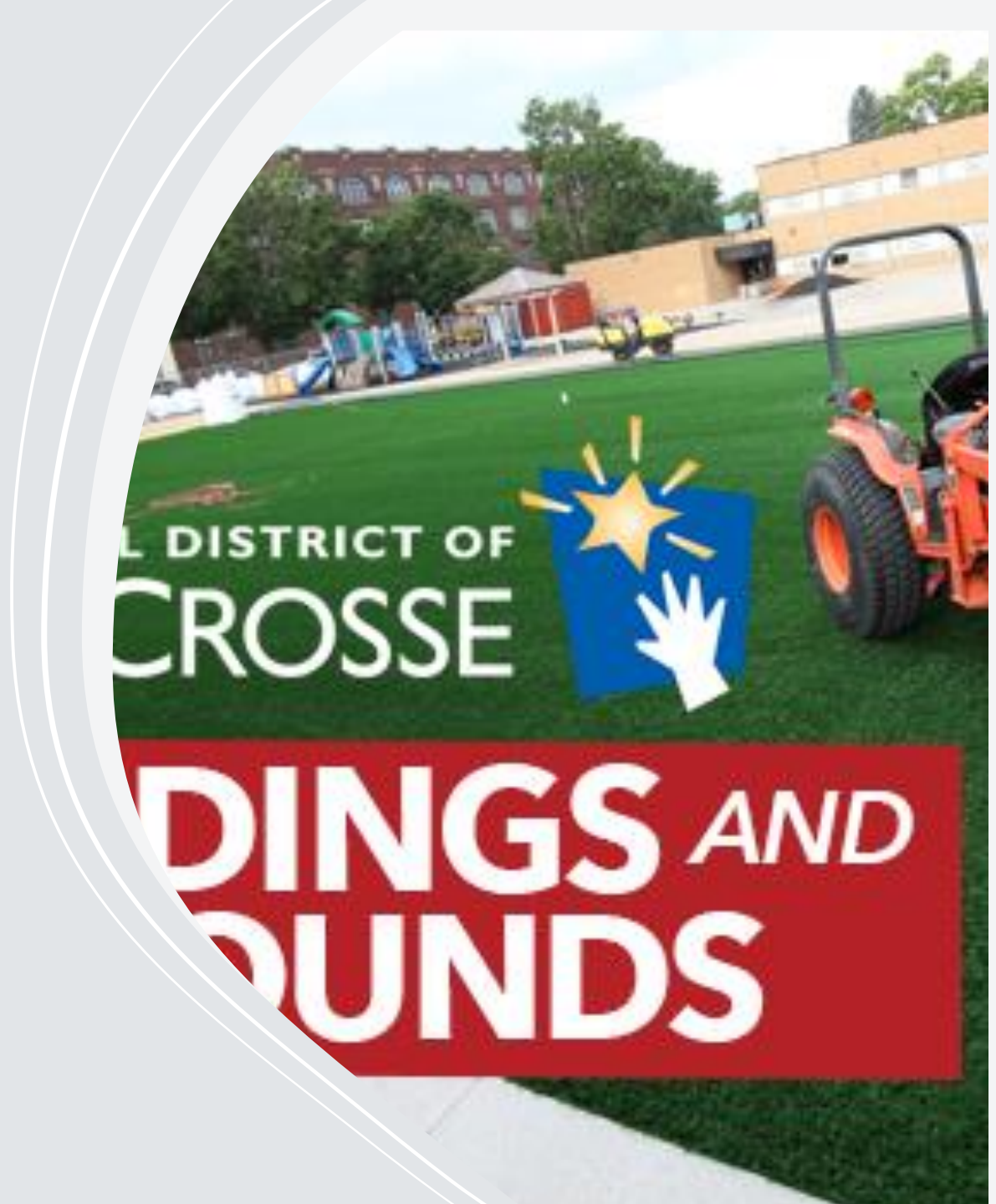
Physical Environment

*Refers to Buildings and Grounds which includes Policies, Procedures, Personnel and Technology.

*Use of Crime Prevention Through Environmental Design (CPTED)

*Use LE Officers who are trained to identify factors of physical environment that can contribute to criminal behaviors.

*Use First Responders to identify physical barriers that can disrupt critical response.



Physical Environment: Site Assessment

- Deterrence
- Detection
- Communications
- Delay
- Response

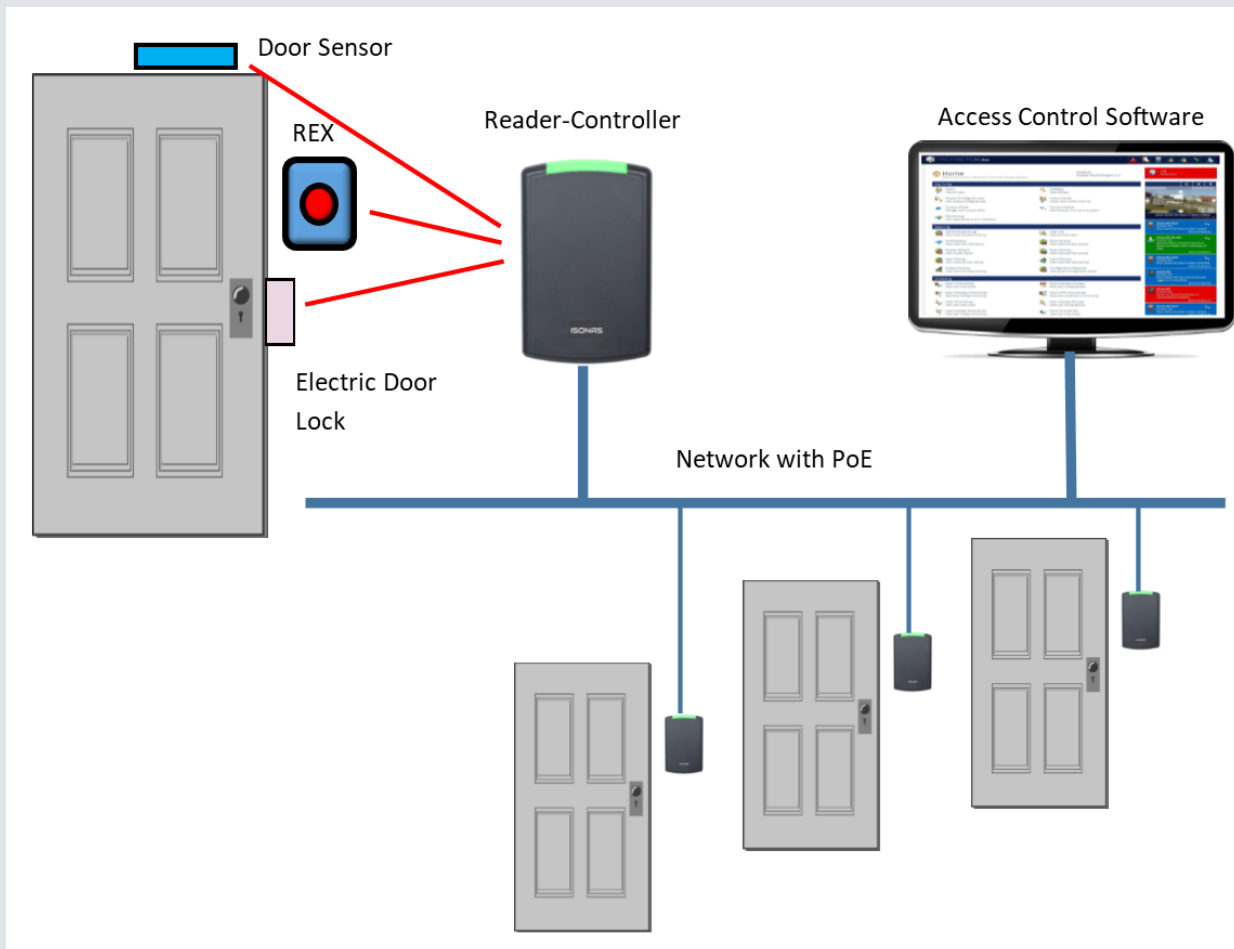
Deterrence

- Presence of Surveillance Cameras
- Presence of Law Enforcement
- Barriers- Natural and Manmade
- Fencing
- Lighting
- Signage



Detection

- Law Enforcement presence
- Access Control System
- Visitor Management System
- Intrusion Alarming
- Staff and Community Patrols



Communications

- Security Monitoring: Intrusion and Fire
- Public Address: PA, Where and How.
- Two Way Radios
- Mass Notification



Delay

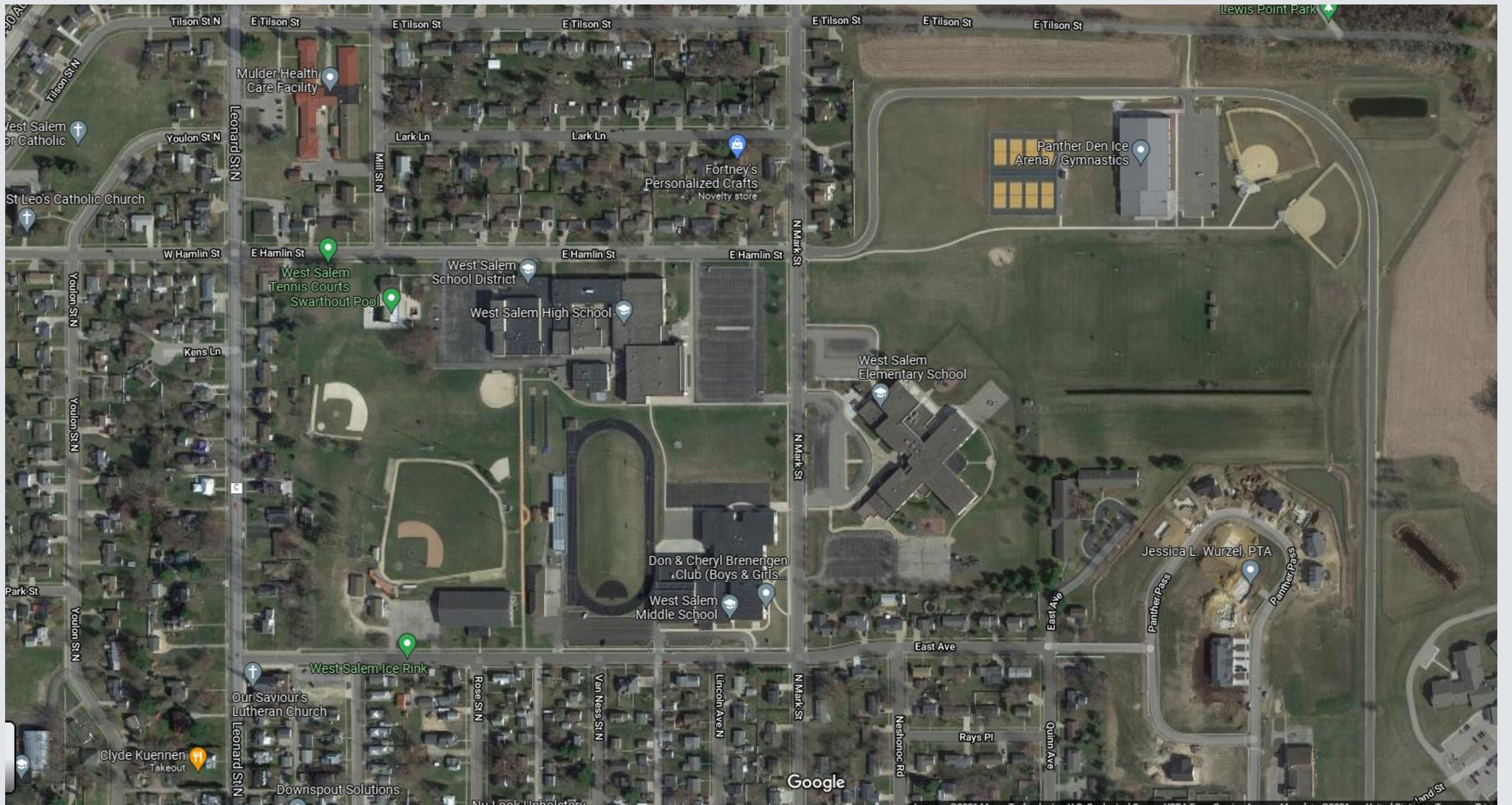
- Exterior Barriers
- Locked Doors
- Window Film
- Vehicle and Speed Reducing Barriers
- Lockdown
- Secured Entrance



Response

- Safety Plans and ICS
- Two Way Radio Communications with Dispatch
- Distance to Emergency Providers
- SRO





Social Environment

Refers to the climate of the school itself. A positive climate has mutual respect and free of fear and intimidation.

Respect of Authority Figure.

Creates a safe learning environment.

Warm, Welcoming climate.

Academic Environment

- Curriculum and Cocurricular programming.
- LE involvement in DARE, GREAT and other law related topics in which they are subject matter experts.
- Involve peer and conflict mediation, youth substance abuse and violence prevention and youth community service programs.



Emergency Responders and School Partnership– School Effectiveness.

- Safe and orderly Environment
- SRO role in a school. Today's environment
- Provide immediate response to life-threatening situations.
- Partnership enables all parties to focus on Mission: Educating Youth.



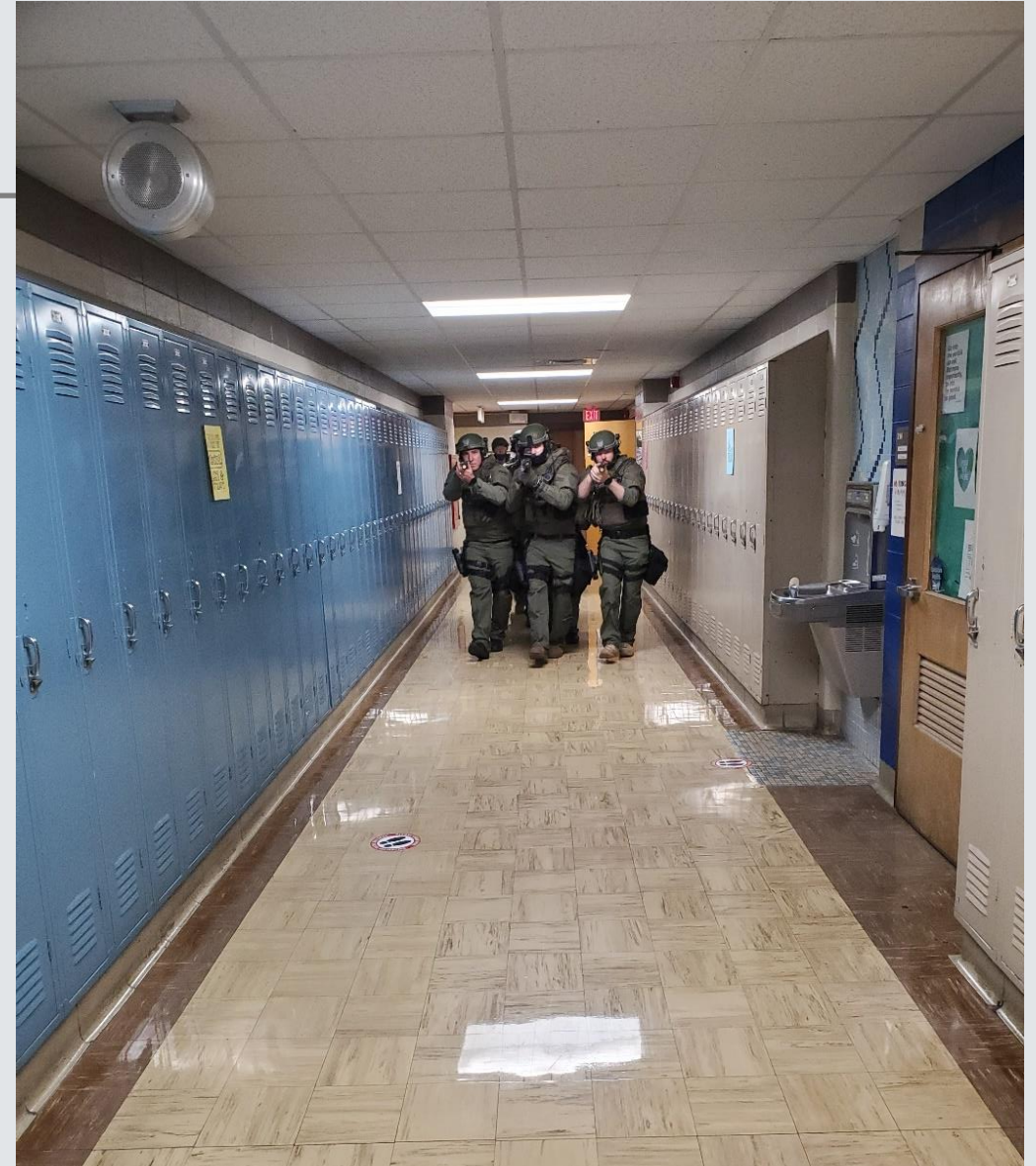
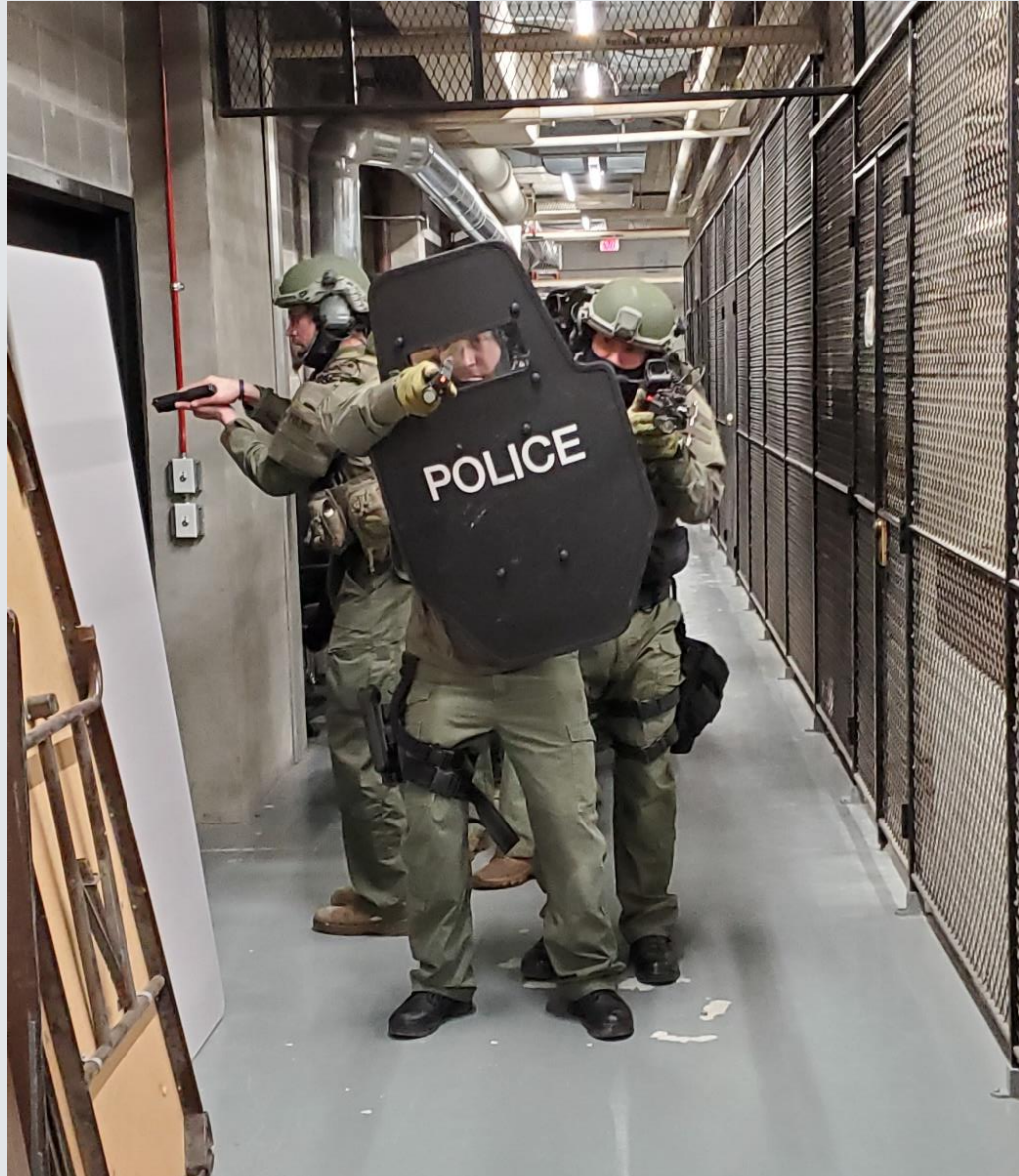
Safety Committee and Planning

Creating the team: Administrators, Staff, Parents, Students, Fire/ EMS, Law Enforcement, County Emergency Management, School Nurse, Counselors, Social Workers, Transportation and Business Services.

How do each of these play a role?

ICS: Incident Command System.

DRILLS DRILLS and DRILLS



Effectiveness of Well Practiced Emergency Plan

Palmyra, Wisconsin In this event a teacher suffered a medical emergency. The Palmyra Public Safety Department (a combined police/fire/EMS service) reports that the school's emergency response plan was incredibly effective. Before emergency first responders arrived the students were removed from the room, the school was put on HOLD to keep hallways clear, and school personnel were stationed at key locations to guide emergency responders to the exact classrooms. CPR was begun within one minute of the patient's collapse and the teacher's heart was defibrillated with the on-site defibrillator even before emergency responders arrived.

The Palmyra Chief couldn't say enough good things about the quality and effectiveness of the school's emergency response. It saved that teacher's life.

Daily Union, January 28, 2019