

MIDWEST FACILITIES CONFERENCE

Building Relationships & Community Partners

HAMILTON/SOTA 1

4.8 Million Dollar Addition

Funding

Gundersen Lutheran Medical Center	1,200,000
Boys & Girls Club of La Crosse (3)	1,200,000
City of La Crosse CDBG	400,000
School District of La Crosse	1,998,000

How Did We Get Here?

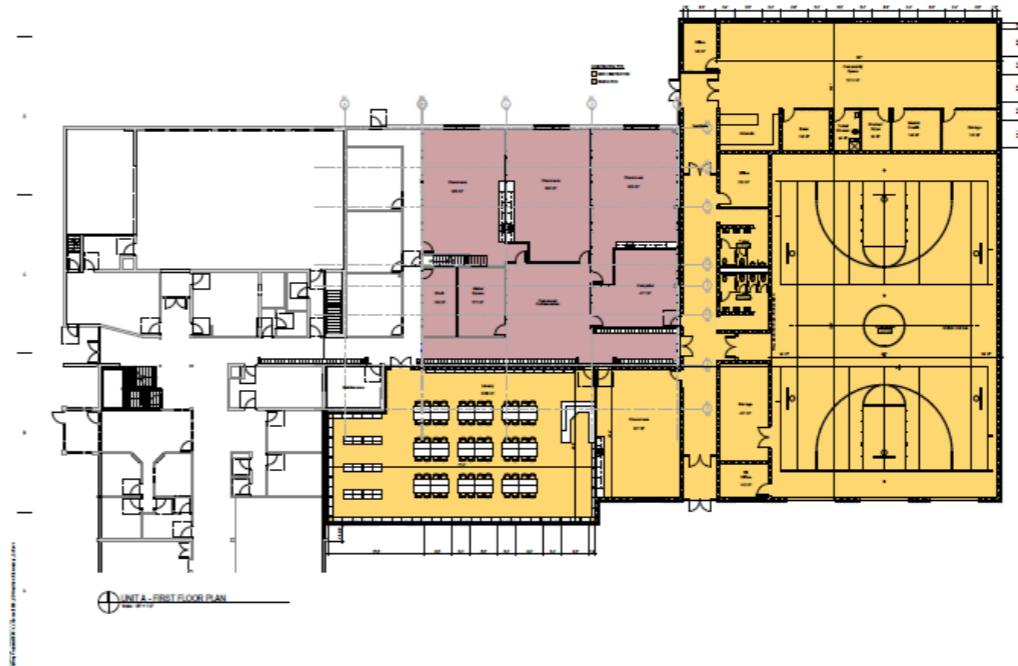


- 2 Superintendents
- 2 Principals
- 2 Plus School Boards
- 100 Community Members
- Multiple Staff Members
- Multiple Meetings

Starts With Vision

Our vision is to be a school in which all students learn. We engage all resources available to help students make progress.

We are a welcoming school and understand the importance of all stakeholders in helping students make progress.

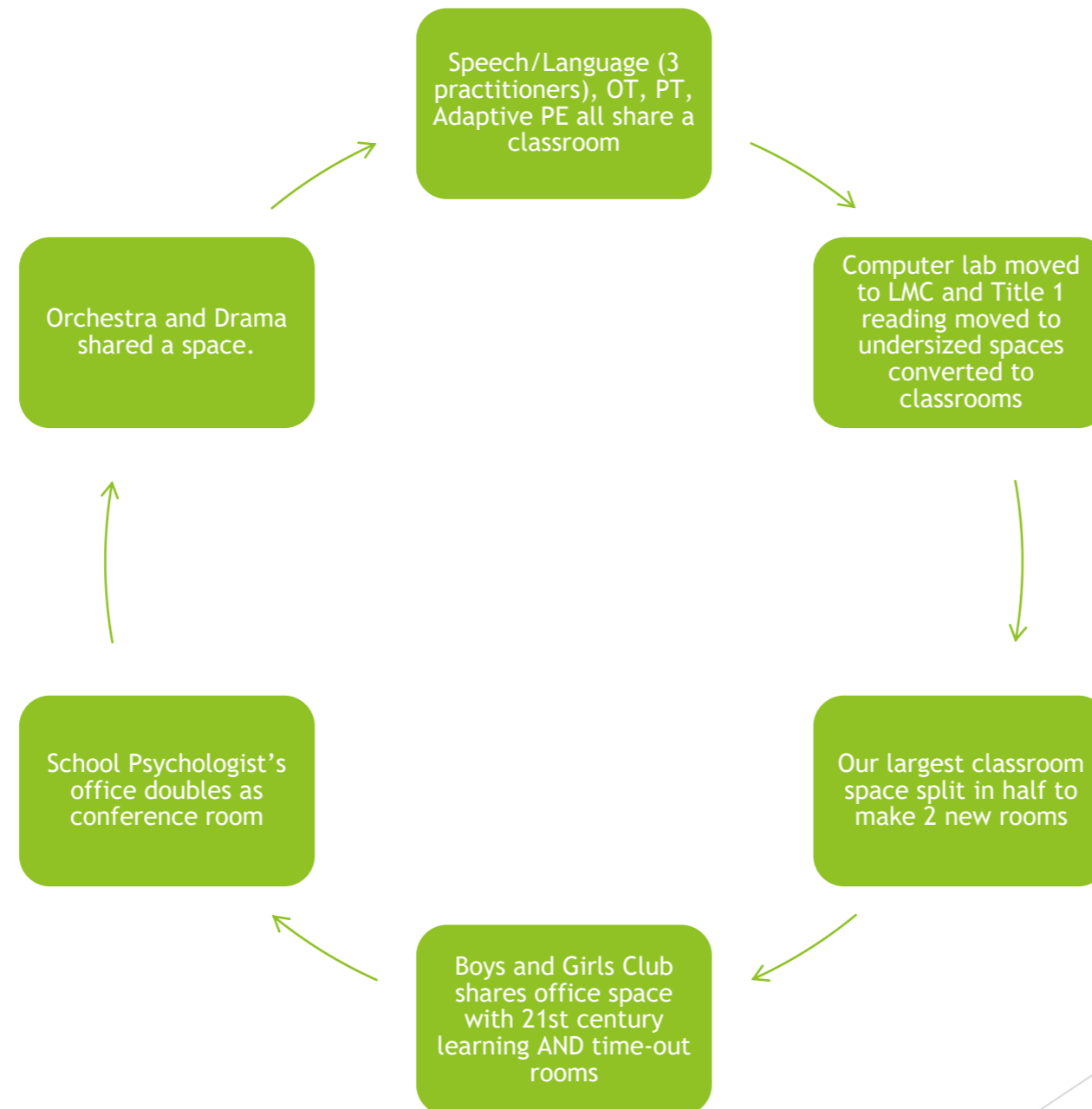


COMMUNITY SCHOOL

A community school is a school where resources for families are gathered, aligned, and activated to foster independence so that students and their families will find success.



THE BEFORE: CREATIVE WITH SPACE



AN INTERESTING DISCOVERY

- We've had countless students make tremendous gains, behaviorally and academically only to spiral backwards due to one catastrophic event at home
- **REALIZATION:** If we're ever going to see student success including academic gains, we **MUST** lift up our families and our neighborhood.
- Next Step: Community School Coordinator
- Power of embedded social work

EFFORTS TO MEET NEEDS

- Global Partners Mentor Program
- 45-15 calendar with robust intersession activities
- BGC on site (k-2)
- Y surround care on site AM and PM
- Monthly Family Nights based on giving families skills
- Readers Creating Readers Program
- United Way Reading Program
- Hunger Task Force/Jim's Grocery Bag

NEEDS IDENTIFIED BY STAFF

- Housing
- Food/Clothing/Basic Needs
- Adult Education/Parent Education/Job Training
- Early Childhood Services/Daycare
- Medical/Dental/Vision
- Mental Health/Counseling/Family Counseling
- Mentorships

TOPIC 1:

- If you could add any service to this neighborhood - something that would enhance the neighborhood for you, personally, what would it be?
- *Which of these is/are most appropriate to be co-located with Hamilton School?*

RESPONSES

- On site health services
- Food Pantry
- Day Care
- Center for food/clothing/supplies
- Educational programs for adults

TOPIC 2:

- With a focus specifically on the children/young people living in this area, what type of program, service or asset would most enhance this neighborhood?
- *Which of these is/are most appropriate to be co-located with Hamilton School?*

RESPONSES

- Job experiences and opportunities to be productive in the community
- Night time recreational programs
- Supervision in parks
- More year round schools
- Financial literacy classes for students



TOPIC 3:

- What could be added or improved in this neighborhood that would help make it, or keep it, a place that people want to live in and move to?
- *Which of these would you consider to be the top priorities?*

RESPONSES

- Retool image of neighborhood
- Affordable housing
- Neighborhood clean up
- Increased parent involvement

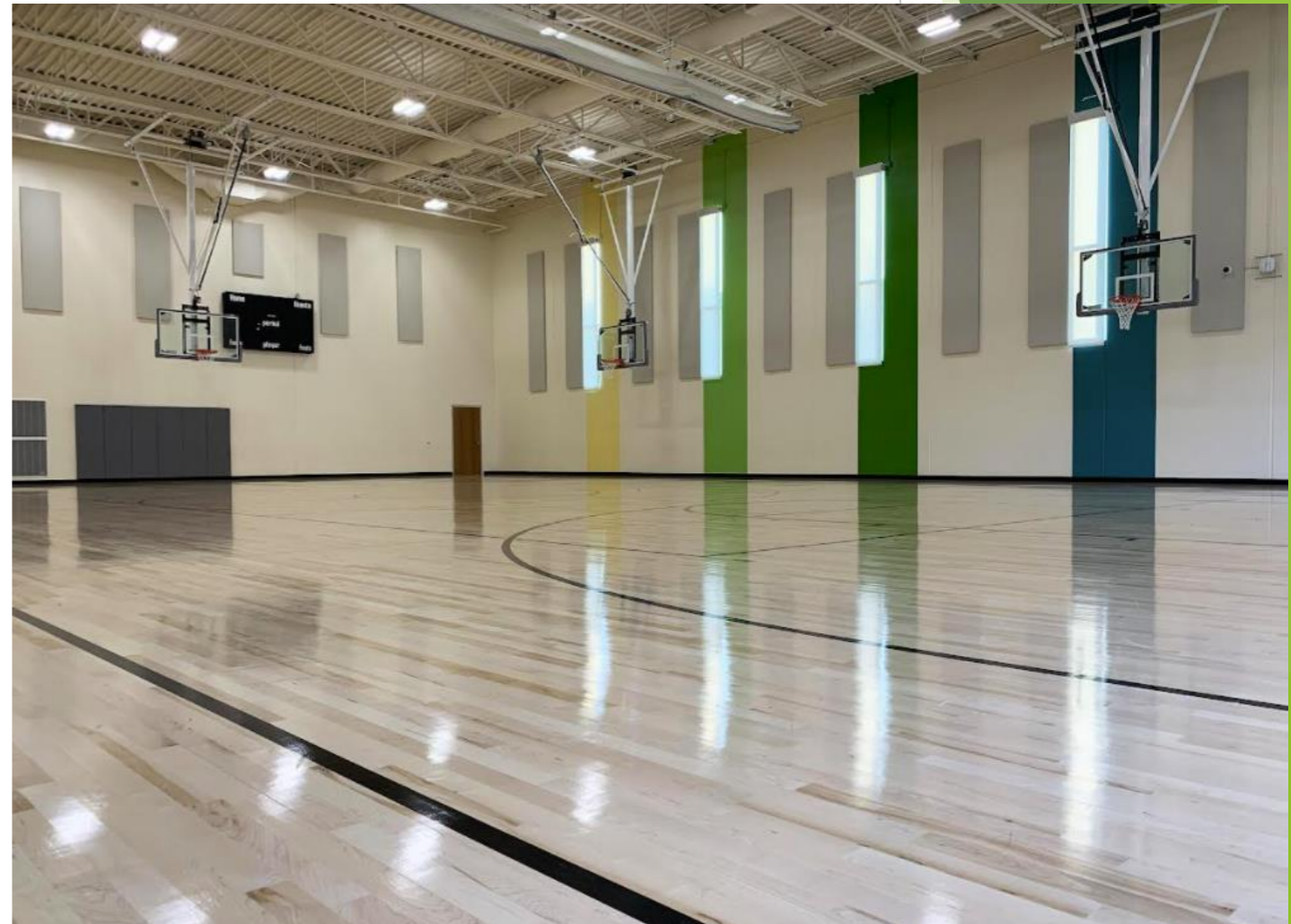


TOPIC 4:

- How could Hamilton School help meet some of these needs identified in the previous section?
- Which theme is most important to address the needs of Hamilton?

RESPONSES

- Increase gym space
- Hire more diverse employees
- Free evening meals at school
- Regular column in the Tribune



Topic 5:

- What physical changes to the Hamilton building (adding or renovating) would most enhance the school and the neighborhood?
- *Which of these would you consider to be the top priorities?*

RESPONSES

- Increase gym space
- Additional classrooms
- Add a 3rd floor



OTHER IMPORTANT THEMES:

- Full Service Grocery Store
- Laundry services
- Arts, Music, Dance (after-school/weekend music and dance programs, studio or stage)
- Paid mentors who are diverse
- Hands on-science, experiential (outdoors, fishing), entrepreneurial

PARTNERSHIPS CREATED

- Gundersen Health System
- Franciscan Sisters of Perpetual Adoration
- Mayo
- Viterbo
- UW-L
- GROW La Crosse
- Neighborhood Resource Officers
- Pet Therapy (Read to Rover)
- PPH Neighborhood Association
- Park and Recreation
- Salzer Square
- Regional Artists/Pump House/Artspire
- City of La Crosse
- La Crosse County (including WNEP nutrition program)
- LPEF
- Central High School Mentors

QUESTIONS?